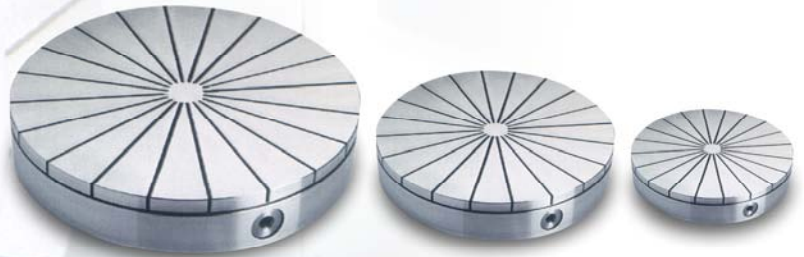


# Neostar

## Circular permanent magnetic chucks with radial poles for grinding and turning



- Double pack of Neodymium magnets provides high holding power
- Symmetrical design allows high turning speeds
- Adjustable holding force (only at set-up)
- Possibility to machine centre through bore

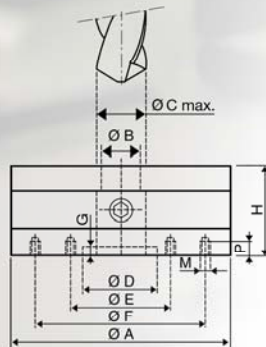
Designed to hold ring shaped components. To accommodate driving pins, stops or pole shoes all steel poles can be machined. Please consult us for details.

For repetitive work additional top plates can be purchased.

Maximum size of centre through bore according to C. Standard execution without through bore.

Usable top plate life: Size 130: 3 mm, other sizes: 7 mm. Nominal holding force: 100 N/cm<sup>2</sup>.

Special executions with reinforced top plate and/or T-nuts or grooves in the top plate available on request. See overleaf.



Code	A [mm]	H [mm]	B [mm]	C max. [mm]	D H7 [mm]	G [mm]	M [mm]	P [mm]	ØE [mm]	ØF [mm]	Number of poles	Weight [kg]
37.00.130	130	57	16	20	50	5	M6	12	-	100	10	6
37.00.150	150	57	20	24	50	5	M6	12	80	120	10	8
37.00.200	200	57	28	30	60	5	M6	12	110	180	12	14
37.00.250	250	70	30	50	80	5	M6	12	140	220	16	27
37.00.300	300	73	40	58	150	6	M8	16	180	260	16	41
37.00.350	350	73	40	58	170	6	M8	16	220	300	20	55
37.00.400	400	75	40	58	200	8	M8	16	260	340	20	75
37.00.500	500	77	60	75	200	8	M8	16	300	400	24	118
37.00.600	600	77	90	100	250	8	M10	20	350	450	30	170

Bigger sizes on request



# Neostar

## Auxiliary top plates for use on Neostar magnetic chucks

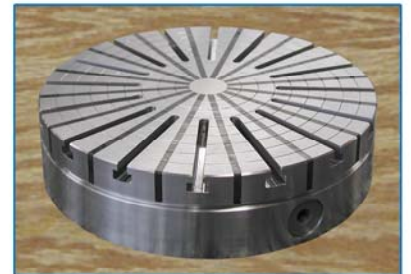
- Holding and positioning of workpieces with irregular contact surface
- Machining up to 70% of top plate thickness
- Fixation on magnet according to requirement or done by yourself

Code	A [mm]	H [mm]	Number of poles	Weight [kg]
70.37.130	Ø 130	20	10	2
70.37.150	Ø 150	20	10	3
70.37.200	Ø 200	20	12	5
70.37.250	Ø 250	20	16	8
70.37.300	Ø 300	20	16	11
70.37.350	Ø 350	20	20	15
70.37.400	Ø 400	20	20	20
70.37.500	Ø 500	20	24	30
70.37.600	Ø 600	20	30	44

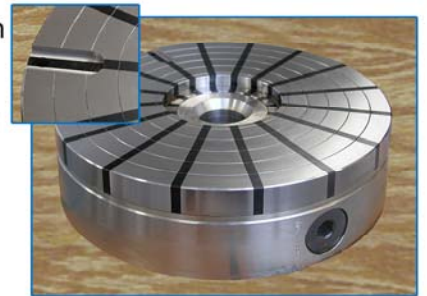
*Special executions and sizes on request*

## Custom engineered executions

Reinforced top plate with T-slots for adjustable pole shoes to hold bearing races during internal and external grinding



Centring bore, through bore and locating slot to position and hold moulds on a polishing machine



Basic central through bore for workpiece centring and coolant supply



Feel free to contact us. Our sales and engineering team will be happy to give you expert advice.