

Permanent magnetic palett for milling type PMA/MIL

REF 40.60.03

{ERREUR : balise [PRESTATION_CRITERE_ASOUST] inconnue}

High holding power / Twin magnetic system / Stabil top plate / Rugged construction / Waterproof construction / Force: : 150 N/cm² / Longer life

Milling, Drilling, Contouring, Machining, Planing

- . Twin magnetic system (magnets inserted into the body as well as into the top plate), offering exceptional holding power for the most severe machining operations on small, medium and large components.
- . Magnetic circuit fitted with generously proportioned Neodymium magnets
- . Very robust construction
- . Without special adaptation

Nominal force : 150 N/cm²

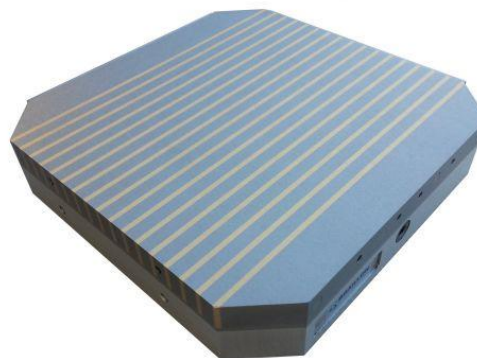
Admissible wear of top plate : 5 mm

Magnetic field height : 8 mm

Options

All our paletts can be delivered in a simple version (without special machining) or for the palettizing system: EROWA-3R-HIRSCHMANN-V&B ...

A specialist can inform you further.



Reference	Poids en kg	A	B	C
40.60.03.250150	17	250	150	58
40.60.03.250250	25	250	250	58
40.60.03.300300	35	300	300	62
40.60.03.320320	38	320	320	62
40.60.03.400300	49	400	300	67

